

We are delighted to be a part of your sports adventure. To ensure you enjoy your purchased product for as long as possible, we recommend carefully reading and following these instructions. If you have any questions, feel free to reach out to us at contact@stride.parts.

Contents

Number	Name	Quantity
1	Bottlecage and computer mount	1
2	Mounting Bar	1
3	M4x14 flathead screws	2
4	Thin bottlecage spacer	1
5	Thick bottlecage spacer	2
6	Thin computer mount spacer	1
7	Thick computer mount spacer	2
8	Assorted M3 screws (for computer mount)	1
9	Assorted M5 screws (for bottlecage)	1
10	Velcro strap (not pictured)	2

Assembly Instructions

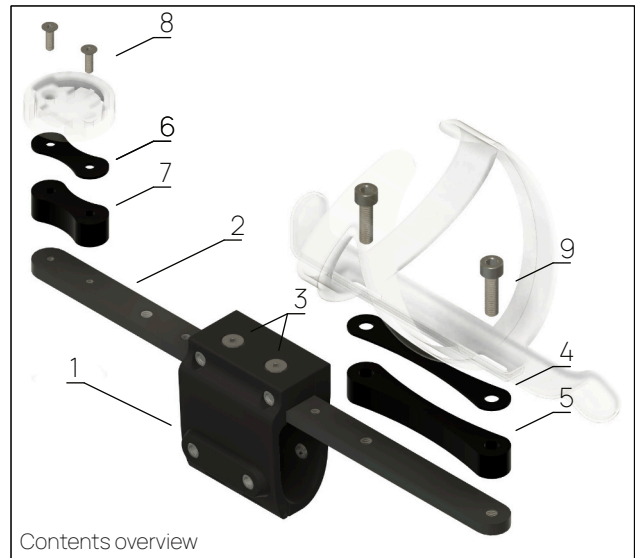
- Adjust position of the mounting Bar on bottlecage and computer Mount. Mounting bar has 4 threaded M4 holes allowing to adjust fore/aft position.
- Mount bottlecage onto mounting bar using two of the provided M5 screws. Make sure the screws cover as much threaded hole as possible, but do not stick out below the mounting bar. Use thin plastic bottlecage spacer if necessary. It is possible to adjust vertical position of the bottlecage by using combination of multiple plastic bottlecage spacers and longer screws.
- Mount computer mount using two of the provided M3 screws. Use thin plastic computer mount spacer if necessary. It is possible to adjust vertical position of the computer mount by using combination of multiple plastic computer mount spacers and longer screws.
- Place the whole assembly over First section of aero bar, computer mount side towards front.
- Screw together using both M4 screws. Do not overtighten, use just enough torque to securely fasten the assembly to cockpit.
- Usage of velcro straps is recommended to remove any possible acoustic disturbances.

Notes

- Both area under the bottlecage and computer mount as well as area within the cockpit itself are more prone to gathering debris (isotonic drink residues, sweat, other liquids). Regularly inspect and clean area under bottlecage and computer mount searching for any signs of corrosion.

Warnings and Information:

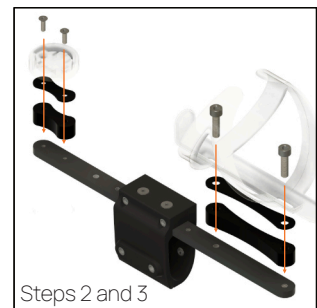
- Failure to adhere to warnings and instructions may result in improper functioning, damage, or destruction of the component, leading to loss of control over the bicycle and potential bodily harm.
- Squeaking produced by the component may be a sign of potential fatigue. During installation, ensure that all components and contact surfaces are clean and undamaged, all threads are clean and mounted with anaerobic adhesive, and tightened with the recommended force. If components still squeak, discontinue use.
- Under-tightening may result in loosening of the component during riding, while over-tightening may lead to component damage, posing the risk of loss of control over the bicycle and potential bodily harm.
- Carefully inspect the condition of each component for signs of damage or fatigue during each installation. If any damage is observed, discontinue use of the component.
- After each component installation, test it in safe conditions. Before each ride or race, ensure that components are correctly installed and in good technical condition.
- Racing and high-performance riding cause significant wear on



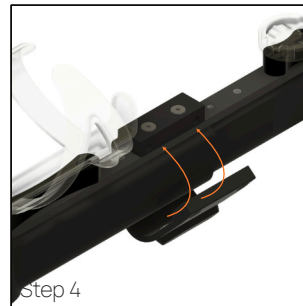
Contents overview



Step 1



Steps 2 and 3



Step 4



Step 5

components and significantly reduce their lifespan. If participating in such events, regular bike and component inspection and servicing are recommended to ensure safety.

- Various factors can shorten the lifespan of a component. Height, weight, riding style, conditions, incorrect installation, excessive use, improper transport, repeated assembly and disassembly, accidents, and crashes are examples of such factors. The more of these factors are present, the shorter the component's lifespan.
- Regularly check the condition of ALL screw connections, as they may loosen due to vibrations.
- In the event of an accident, carefully check all components for damage. If any of them are damaged in any way, discontinue their use.
- FPJ Manufacturing Sp. z o.o is not responsible for damages incurred due to incorrect assembly, maintenance, and operation of components.
- FPJ Manufacturing Sp. z o.o. reserves the right to make changes and updates to stride.parts brand instructions without prior notice.
- © 2024 FPJ Manufacturing Sp. z o.o. The stride.parts brand, along with its corresponding logo and name, is the exclusive property of FPJ Manufacturing. All rights reserved.